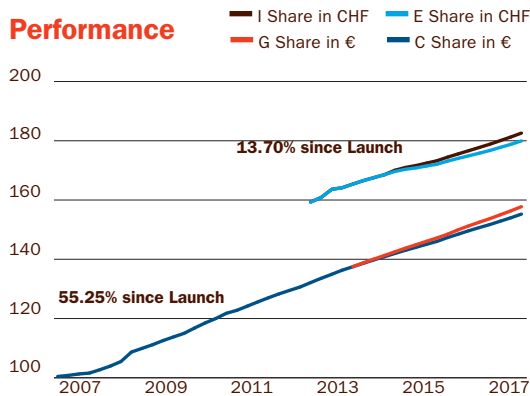


As of September 30, 2018

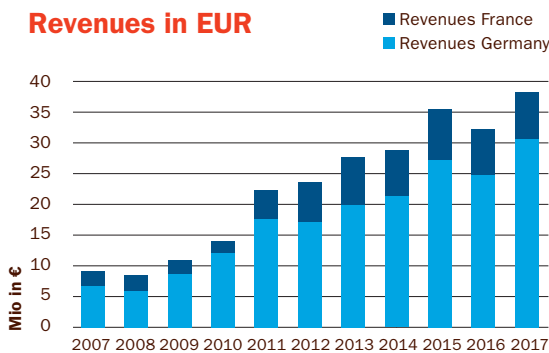
## Performance



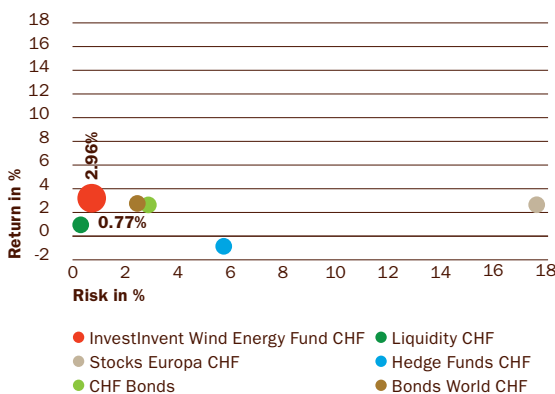
As of 30.09.18	Net asset values	Dividends 2017
<b>Fund Volume</b>	<b>EUR 147.72 mio</b>	
B class distributing	EUR 133.18	EUR 4.61
C class accumulating	EUR 159.59	
D class distributing	CHF 153.89	CHF 5.33
E class accumulating	CHF 184.17	
F class distributing	EUR 135.84	EUR 4.69
G class accumulating	EUR 162.66	
H class distributing	CHF 155.39	CHF 5.37
I class accumulating	CHF 187.41	

The past performance and dividend amounts can not be guaranteed for the future.

## Revenues in EUR



## Risk - Return since Launch



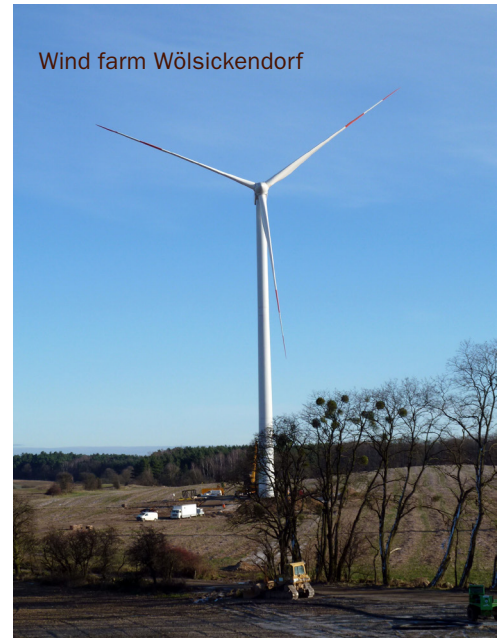
## Portfolio Manager's Report

The Fund acquired the wind farm «Wölsickendorf» in 2010 with an internal rate of return (IRR) of 9.5%. The signing of the sale took place in Switzerland in the third quarter of this year. Depending on the buyer's assumptions, he will achieve an IRR between 3.00 and 4.50% p.a.

The value of this wind farm has therefore increased over the last eight years by almost 63%.

The Fund's basic buy-and-hold strategy shall be maintained. Nevertheless, divestment opportunities will be evaluated by the Portfolio Manager.

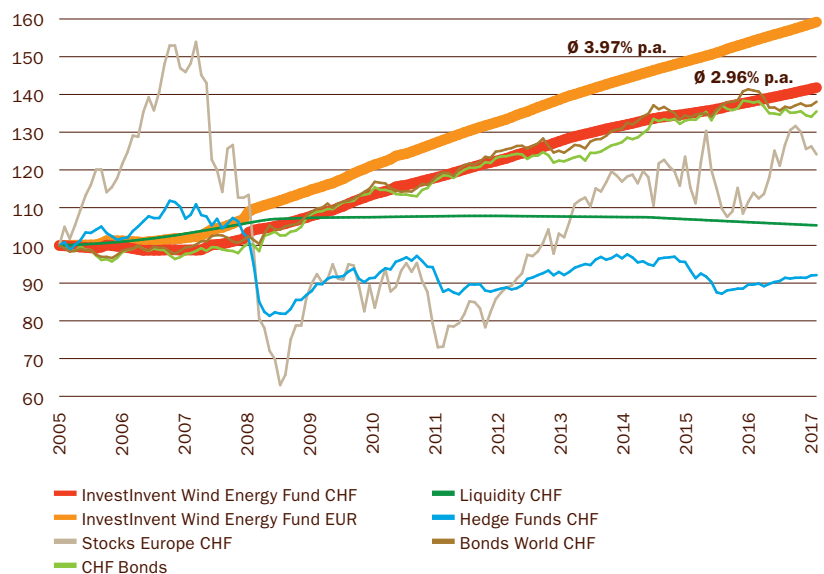
In September the international wind energy exhibition in Hamburg took place. InvestInvent took this opportunity to meet-up with service providers, lending banks as well as developers and discussed conditions, investment possibilities and technical innovations.



## Performance of the accumulating classes in %, net

Classes		30.09. 2018	2017	2 years	5 years	10 years	Ø p.a. 10 years
G class	EUR	3.11	3.44	7.16	-	-	-
C class	EUR	2.80	3.02	6.30	17.48	51.13	4.22
I class	CHF	2.64	2.73	5.38	-	-	-
E class	CHF	2.34	2.37	4.56	12.95	-	-

## Performance since Launch (12 years) in CHF



As of September 30, 2018

## Portfolio

	Wind farm share of the portfolio	Fund's share in the wind farm
<b>France</b>	18%	
Hauteurs de Gâtine	9%	100%
Aube I	5%	35%
Momerstroff	4%	95%
<b>Germany</b>	82%	
Hohengüstow	7%	100%
Lage	6%	100%
Lieger Wald	5%	100%
Neu Kosenow	5%	100%
Gross Bisdorf	5%	100%
Stretense/Panschow	5%	100%
Oelsig	4%	100%
Oelerse VIII	4%	100%
Kraasa	4%	100%
Oelerse	4%	100%
Steinau	4%	100%
Undenheim	4%	100%
Dübrichen-Priessen	3%	100%
Bärweiler	3%	100%
Rottelsdorf-Trattendorf	3%	100%
Petersdorf I	2%	100%
Bad Berleburg	2%	100%
Birkholz	2%	100%
Krummensee	2%	55%
Kraasa VII	2%	100%
Nateln	1%	100%
Elchweiler	1%	100%
Oyten-Ost	1%	100%
Petersdorf II	1%	100%
Radegast	1%	100%
Hambuch	1%	100%

## Investment Objective

The InvestInvent Wind Energy Fund buys, sells and operates wind farms. The aim is to earn stable, financial market independent returns with a controlled risk for investors.

## Fund Profile

<b>Type of Fund</b>	Stock company with variable capital (SICAV); Alternative Investment Fund (AIF); Malta
<b>Distribution</b>	It is not permitted to offer the Fund to the public
<b>Portfolio Manager</b>	InvestInvent AG
<b>Administrator</b>	Ahead Wealth Solutions AG
<b>Custodian</b>	Sparkasse Bank Malta
<b>Sub- Custodian</b>	Bank Frick, Liechtenstein
<b>Auditors</b>	PricewaterhouseCoopers
<b>Currencies</b>	EUR/CHF
<b>Launch Date</b>	August 31, 2005
<b>Appropriation of profits</b>	distributing accumulating
<b>TER – according SFAMA</b>	2.21% per 31.03.2018 share classes B-E 1.81% per 31.03.2018 share classes F-I
<b>Redemption Fee</b>	None
<b>Redemption Period</b>	45 business days notice to the month end
<b>Share classes:</b>	
<b>Valor B + C Share in EUR</b>	2268793 / 2989507
<b>Valor D + E Share in CHF</b>	19380146 / 19380150
<b>Valor F + G Share in EUR</b>	22698111 / 22698121
<b>Valor H + I Share in CHF</b>	22698122 / 22698126
<b>ISIN B + C Share in EUR</b>	MT0000072992 / MT0000074295
<b>ISIN D + E Share in CHF</b>	MT7000006086 / MT7000006094
<b>ISIN F + G Share in EUR</b>	MT7000009429 / MT7000009437
<b>ISIN H + I Share in CHF</b>	MT7000009445 / MT7000009452
<b>NAV Calculation</b>	Monthly
<b>Investment Horizon</b>	Long-term
<b>Subscriptions</b>	up to 2 business days before month end
<b>Home Page</b>	<a href="http://www.investinventfund.com">www.investinventfund.com</a>

## Contact

### Portfolio Manager

InvestInvent AG  
Schiffaende 26  
CH-8001 Zurich  
Switzerland  
Tel: +41(0)44 250 20 60  
info@investinvent.ch

### Administrator

Ahead Wealth Solutions AG  
Austrasse 15  
FL-9490 Vaduz  
Liechtenstein  
Tel: +423(0)239 85 00  
investinvent@ahead.li

The State of the origin of the Fund is Malta. This document may only be distributed in or from Switzerland to qualified investors within the meaning of Art. 10 Para. 3, 3bis and 3ter CISA. In Switzerland, the Representative is ACOLIN Fund Services AG, Affolternstrasse 56, CH-8050 Zurich, whilst the Paying agent is NPB Neue Privat Bank AG, Limmatquai 1/am Bellevue, P.O. Box, CH-8024 Zurich. In respect of the units distributed in Switzerland, the competent Courts shall be at the registered office of the Representative in Switzerland. The Basic documents of the Fund as defined in Art. 13a CISO as well as the annual and, if applicable, semi-annual reports may be obtained free of charge at the office of the representative.